

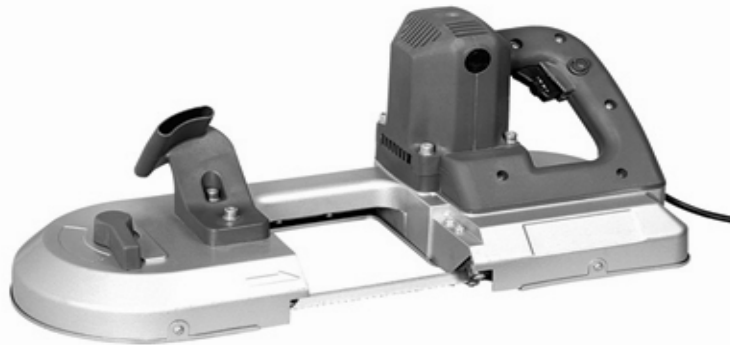
WIDDER
pipe cutting equipment



www.highprecisioninc.com

375 Morse St., Hamden CT 06517
(203) 777-5395 (800) 525-1997

18401 Electric Portable Band saw



Drive Motor: 120 V, 6 Amps
Speed – 0-240 Feet per Minute
Replacement Blade: 3 Ft. 8-7/8 In. x 1/2”
Cutting Size: 4.5” Round, 4.5” Square

Safety Warnings:

Warning: This is an outline of suggested safety precautions. As with all power tools, follow generally accepted precautions for any electrical tool and metal cutting application.

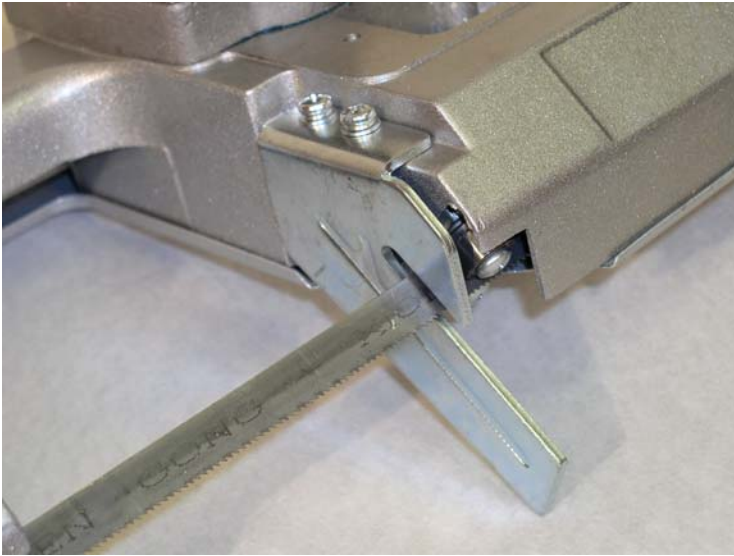
Caution – follow all precautions outlined below, read all warnings and operating instructions before using this or any power tool.

- 1- Be sure work area is clean and free of debris. Be sure operator has secure footing. Use tool only in a steady, secure work position.
- 2- Do not operate under the influence of drugs or alcohol. Do not operate if drowsy or ill.
- 3- Be sure tool is used clear from other workers, children, or animals.
- 4- Do not operate near power lines, in wet areas or on wet applications.
- 5- Wear proper safety equipment including proper ANSI or OSHA approved safety glasses, boots, and gloves. Do not operate with any loose clothing, lines, jewelry, etc., that could become caught in the tool, blade, or workspace.
- 6- Inspect tool before each use for damaged or frayed cords, broken plugs, bent or damaged components, etc. Do not operate with loose or dull blade.
- 7- Do not plug or unplug machine with power switch engaged.
- 8- Unplug tool when not in use. Store tool unplugged. Do not attempt to inspect or service tool while plugged in.
- 9- Use only appropriate circuits and cords for this tool. Power tools should be used with the shortest extension cords only, rated for at least 50% more than the rated amp load listed above. Do not combine cords for extra length. This could cause cord failure and fire and could damage the drive motor. In outdoor applications, use on GFI circuits only with outdoor rated cords.

Tool Operating Instructions:

Warning: Do not plug in tool until the following procedures are complete. Attach blade guide before using.

1 - Install blade guide per photo below:



2 - Inspect blade for damage and be sure blade is sharp. Be sure blade is in roller guides and teeth point in proper direction.

3 - Tighten blade by flipping blade tensioning lever – be sure the blade is in the guides and still moves smoothly.

4 - Plug in tool following all safety warnings.

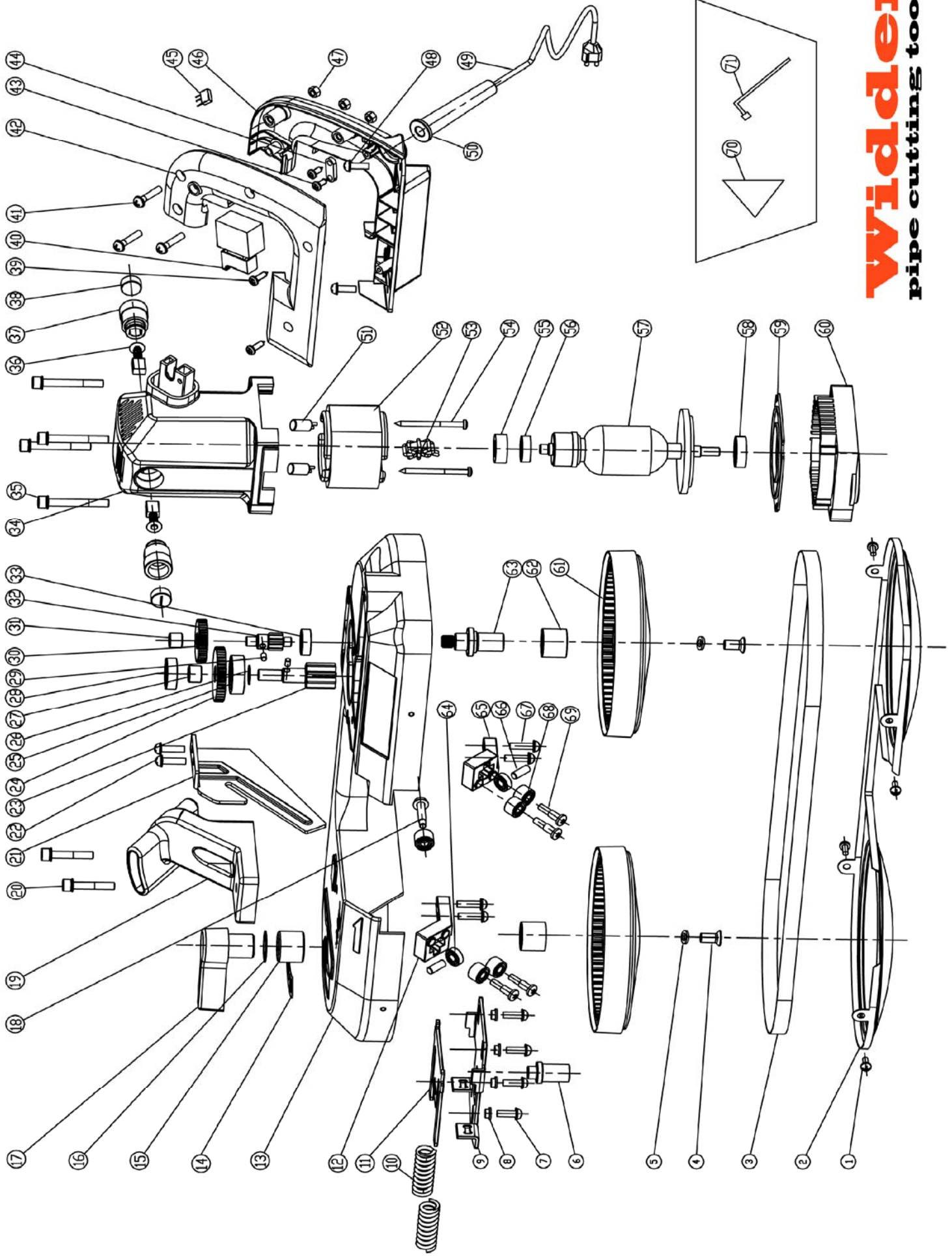
5 - Be sure work piece is secure.

6 - Place blade guide against work piece. Power on the tool by depressing the on/off switch. Place tool into cut slowly with blade at right angles to the work piece with firm grip. Do not force the tool, chips should be in the shape of small number “6”s or “9”s.

7 - Allow tool to come to a stop before setting down.

8 - Store with blade tension removed and tool unplugged.

Model # 18401



Widdler
pipe cutting tools

WIDDER Electric Band Saw #18401 - (MFG# 28-0001)

Item	Part #	MFG#	Description	Q/unit	Item	Part #	MFG#	Description	Q/unit	Item	Part #	MFG#	Description	Q/unit
1	18409	27-1016	Stud	4	23	18453	27-1104	Gear Shaft	1	66	18475	27-1126	Pin Shaft	1
2	18480	27-1131	Cover	1	24	18510	28-1101	Gear	1	67	18473	27-1124	Blade Guide Fasteners	3
3	18479	27-1130	Blade	1	25	18451	27-1102	Ball Bearing	1	68	18488	27-1139	Bearing Assembly	4
4&5	18469	27-1120	Screw (Ring Gear)	2	26	18450	27-1101	Stop Ring	1	69	18476	27-1127	Screw	4
6/9/10/11	18464	27-0013	Spring Plate Assembly	1	27	18511	28-1102	Bushing	1	70	18482	27-1133	Square	1
7	18463	27-1114	Screw – M5x15	4	28	18489	27-1140	Ball Bearing	2	71	18483	27-1134	Hex Key	1
8	18462	27-1113	Collar	4	29	18452	27-1103	Pin	2					
12	18459	27-1110	Left Guide	1	30	18512	28-1002	Gear, Helical	1					
13	18458	27-1109	Frame	2	31	18513	28-1003	Needle Bearing	1					
14			N/A	1	32	18514	28-1004	Gear Shaft	1					
15	18484	27-1135	Bushing	1	33	18515	28-1005	Ball Bearing	1					
16			N/A	1	34-60	18516	28-1001	Motor Assembly	1					
17	18454	27-1105	Tension Handle	-	40	18517	28-1006	Switch & Lock	1					
18	18485	27-1136	Pan-head Screw	-	49&50	18518	28-1007	Cord Assembly	1					
19	18456	27-1107	Grip Handle	-	61&62	18468	27-1119	Pulley Assembly	2					
20	18457	27-1108	S.H.S.C.	2	63	18486	27-1137	Pulley Stud - Fixed	1					
21	18478	27-1129	Guide Bar	1	64	18474	27-1125	Bearing	3					
22	18477	27-1128	Guide Bar Fasteners	2	65	18470	27-1121	Right Guide	1					